

# MYOB Exo Business

## Release Notes

2016.3



# New Features

## Important Upgrade Notice

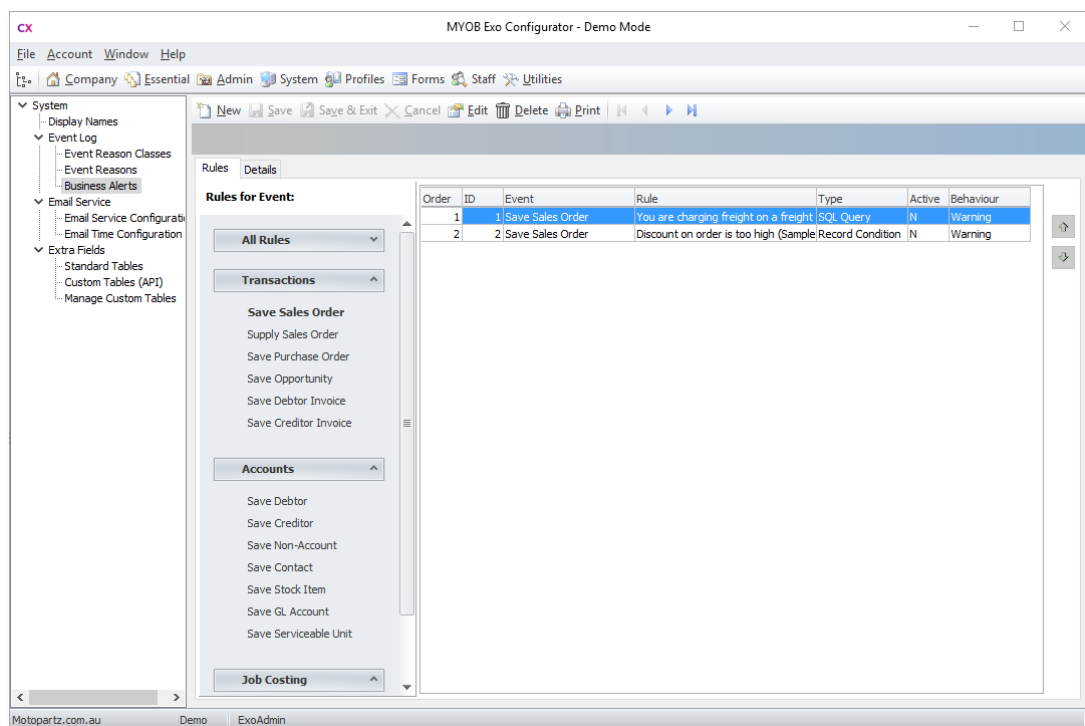
The **Exonetlib.dll** DLL has been updated in this release. When upgrading manually, make sure to install and register the upgraded DLL—its version number should be 2016.3.0 or later.

## Updates to Business Alerts

This release adds the ability to set up new Business Alerts for a wide range of events. New event categories are available in the **Rules for Event** dropdown on the Business Alerts screen in Exo Business Config:

- Save Debtor
- Save Creditor
- Save Non-Account
- Save Contact
- Save Stock Item
- Save GL Account
- Save Serviceable Unit

The Business Alerts screen has been redesigned to group events into sections:



## New Parameters

The following new parameters are available for Business Alerts:

Parameter	Meaning
<b>General (available for all types)</b>	
@NOW_STR	The current date and time as a string in the format 'yyyy-mm-dd hh:MM:ss' (including quote marks).
@TODAY_STR	The current date as a string in the format 'yyyy-mm-dd' (including quote marks).
<b>Company accounts</b>	
@ACCNO	The Debtor, Creditor or Non Account's ID number.
@ALHPACODE	The Debtor or Creditor account's name. (Not available for Non Accounts.)
@H	A specified field from the DR_ACCS, CR_ACCS or PROSPECTS table.
<b>Contacts</b>	
@CONTACTID	The contact record's ID number.
@ACCOUNTNAME	The name of the company account that the contact is associated with.
@H	A specified field from the CONTACTS table, e.g. @H.FIRSTNAME.
<b>General Ledger accounts</b>	
@ACCNO	The GL account's ID number.
@H	A specified field from the GLACCS table, e.g. @H.BALANCE.
<b>Stock items</b>	
@STOCKCODE	The Stock item's ID code.
@ACCNO	The ID number of the stock item's supplier.
@H	A specified field from the STOCK_ITEMS table, e.g. @H.SELLPRICE1.
<b>Serviceable Units</b>	
@UNITNAME	The Serviceable Unit's name.
@STOCKCODE	The ID code of the stock item on the unit (this may be null).
@H	A specified field from the SU_MAIN table, e.g. @H.UNITDESC.
@W	A specified field from the SU_WARRANTY table, e.g. @W.EXPDATE.

## Maximum Number of Extra Fields

In previous versions, the maximum number of Extra Fields that could be added to a table was 24. This version increases the limit to 38 for most tables; for tables that are accessible via the Exo API only, the limit has been increased to 100.

## Provisional Tax

The NZ GST Return function can now include provisional tax information when submitting the GST Return to the IRD. You can pay provisional tax along with your GST, or, if your GST return shows a refund, you can apply some or all of this refund against the provisional tax amount.

**Note:** Exo Business does not support the Ratio method for calculating provisional tax. You will need to manually calculate and file your GST return if you are on the Ratio method.

A new **GST Return Type** dropdown on the Header tab of the NZ GST Return window lets you specify whether or not the GST return should include provisional tax:

The screenshot shows the 'EB NZ GST Return' window with the 'Header' tab selected. The 'GST Return Type' dropdown is highlighted with a red box and is open, showing the following options:

- Provisional Taxpayers: GST 103B (Ratio method not supported)
- Non-Provisional Taxpayers: GST 101A
- Provisional Taxpayers: GST 103B (Ratio method not supported)

**Note:** If you pay provisional tax, you will need to select the "Provisional Taxpayers: GST 103B" option every period, even for periods where you are not paying provisional tax.

## New Features

When the “Provisional Taxpayers: GST 103B” option is selected, an extra Provisional Tax tab becomes available. Once the GST return is calculated, you can enter provisional tax details into this tab. The available fields differ depending on whether or not the GST return indicates a payment (to which the provisional tax payment will be added) or a refund (which can be used to offset the provisional tax amount):

Header	Detail	Provisional Tax	Calculation Sheet
<b>Compulsory provisional tax period</b> - Provisional tax instalment due or <b>Voluntary provisional tax period</b> - Total Voluntary amount you would like to make	24	\$ 1000.00	
If Box 15 from page 1 is a <b>refund</b> , enter the amount you would like to transfer to provisional tax, otherwise enter zero (0)	25	\$ 250.00	
Subtract Box 25 from Box 24. If Box 25 is larger than Box 24, enter zero (0)	26	\$ 750.00	
If Box 15 from page 1 is <b>GST to pay</b> enter amount here, otherwise enter zero (0)	27	\$ .00	
Add Box 26 and Box 27 <b>This is your GST and/or provisional tax to pay</b>	28	\$ 750.00	

The amounts on this tab are displayed on the printed GST Return report, and included in the return when it's submitted to the IRD using the **IRD** button. (This was formerly the **SBR** button—as Standard Business Reporting is specific to Australia, this terminology has been changed in the New Zealand interface).

## New Features

When submitting a return that includes provisional tax, the provisional tax fields are added to the Submit GST Return Confirmation window:

**EB Submit GST Return Confirmation**

Ird Number: 12345678  
Period Start Date: 15-08-2016

<b>Total sales and income</b> for the period (including GST and any zero-rated supplies)	5	\$ 0	.00
Zero-rated supplies included in Box 5	6	\$ 0	.00
Subtract Box 6 from Box 5	7	\$ 0	.00
<b>Multiply the amount in Box 7 by three (3) then divide by twenty three (23)</b>	8	\$ 0	.00
Adjustments from your calculation sheet	9	\$ 1,388	.55
Add Boxes 8 and 9. This is your <b>total GST collected</b> on sales and income.	10	\$ 1,388	.55
<b>Total purchases and expenses</b> (including GST) for which tax invoicing requirements have been met, excluding any imported goods	11	\$ 0	.00
<b>Multiply the amount in Box 11 by three (3) then divide by twenty three (23)</b>	12	\$ 0	.00
Credit adjustments from your calculation sheet	13	\$ 2,411	.63
Add Box 12 and Box 13. This is your <b>total GST credit</b> for purchases and expenses.	14	\$ 2,411	.63
<b>Print the difference between Box 10 and Box 14 here</b>	15	\$ -1,023	.08
<input type="radio"/> GST to pay <input type="radio"/> Refund			
<b>Compulsory provisional tax period</b> - Provisional tax instalment due or	24	\$ 1,000	.00
<b>Voluntary provisional tax period</b> - Total Voluntary amount you would like to make			
If Box 15 from page 1 is a <b>refund</b> , enter the amount you would like to transfer to provisional tax, otherwise enter zero (0)	25	\$ 500	.00
Subtract Box 25 from Box 24. If Box 25 is larger than Box 24, enter zero (0)	26	\$ 500	.00
If Box 15 from page 1 is <b>GST to pay</b> enter amount here, otherwise enter zero (0)	27	\$ 0	.00
Add Box 26 and Box 27	28	\$ 500	.00
<b>This is your GST and/or provisional tax to pay</b>			

The information in this return is true and correct and represents my assessment as required under the Tax Administration Act 1994. ☐

Submit Cancel

In New Zealand, the SBR Manager window has been renamed to Inland Revenue Lodgements. This window now includes extra columns related to GST returns.

## Update to Stock Search

In previous releases, when entering a stock code and using the ? wildcard, if there was a record that matched the code exactly, it would be selected automatically and the Stock Search window would not appear. As of this release, when the ? wildcard is included in a stock code search, the Stock Search window always appears, showing any entries that match code.

This can be useful when entering stock codes, as it shows the user any records that may be related to the entered code, which would not have been visible otherwise, e.g. related barcodes or stock items that have superseded the entered item.



## Update to the Integrated Cashbook

The Integrated Cashbook now supports more than 200 rows. By default, it pre-allocates 200 rows (the maximum in previous versions), but it is now possible to add more rows by pressing the down arrow key while on the last row.

## Updates to the GL Report Writer

This release adds setup options to the GL Report Writer, which provide more flexibility when setting up percentage-based columns, and allow report columns to be organised more neatly. Two new properties are available on the Report Column Setup window:

In previous versions, columns with the type “PERCENTAGE” would calculate all values in the column as percentages of a nominated total (the total is taken from the row specified by the **% Row sequence** setting). The new **%Range Row Seq** setting lets you specify a range for the percentage calculations—the report will calculate percentage values for all rows between the **%Range Row Seq** row and the **% Row sequence** row, and leave all other rows blank.

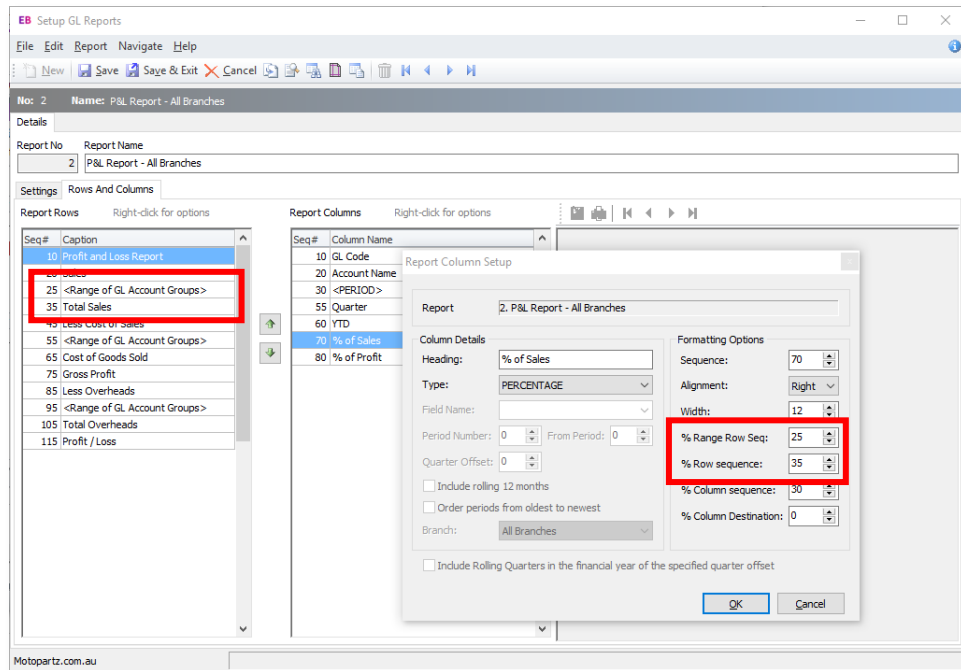
The new **%Column Destination** value lets you insert a range of percentage values into a different column. This allows you to set up multiple columns to calculate multiple ranges as percentages, then display all ranges in a single column on the printed report.

The new options are supported when printing GL Reports, when printing them with a Clarity template, and when exporting them to Excel.

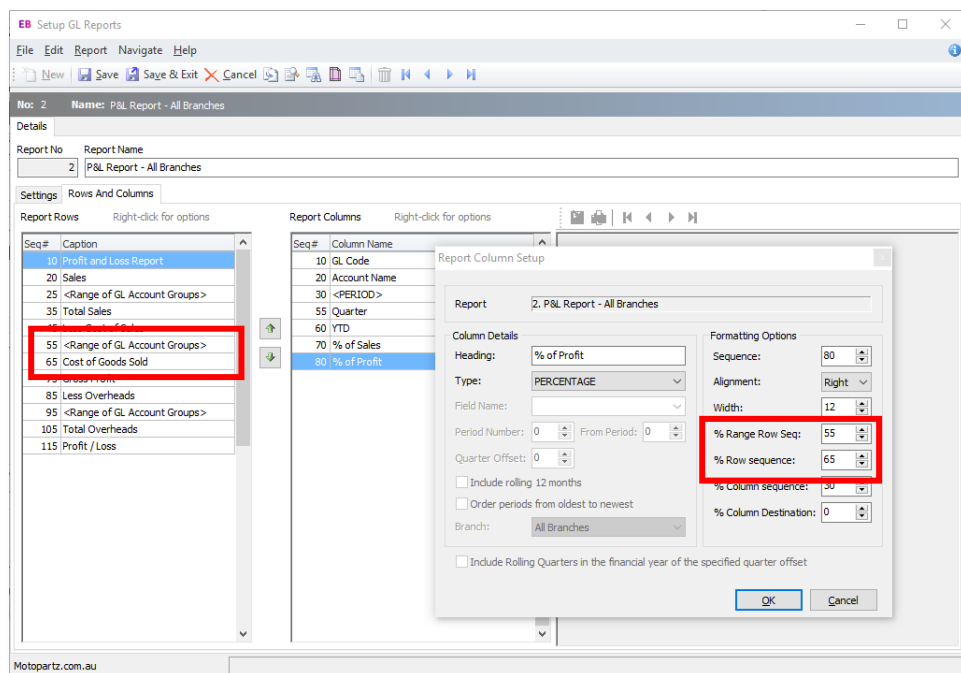
**Note:** If **%Range Row Seq** is set to -1, the system will behave as it did in previous versions and the **%Column Destination** setting will be ignored.

## Example

The screenshot below shows a “% of Sales” column, which expresses the values from column 30 (<PERIOD>) as percentages of row 35 (Total Sales). The **%Range Row Seq** property is set to 25, which means that percentages will only be calculated from row 25 (<Range of GL Account Groups>) to the Total Sales row.



A “% of Profit” column has also been set up to express the values from column 30 (<PERIOD>) as percentages of row 65 (Cost of Goods sold). The **%Range Row Seq** property is set to 55, which means that percentages will only be calculated from the second <Range of GL Account Groups> section to the Cost of Goods Sold row.





## New Features

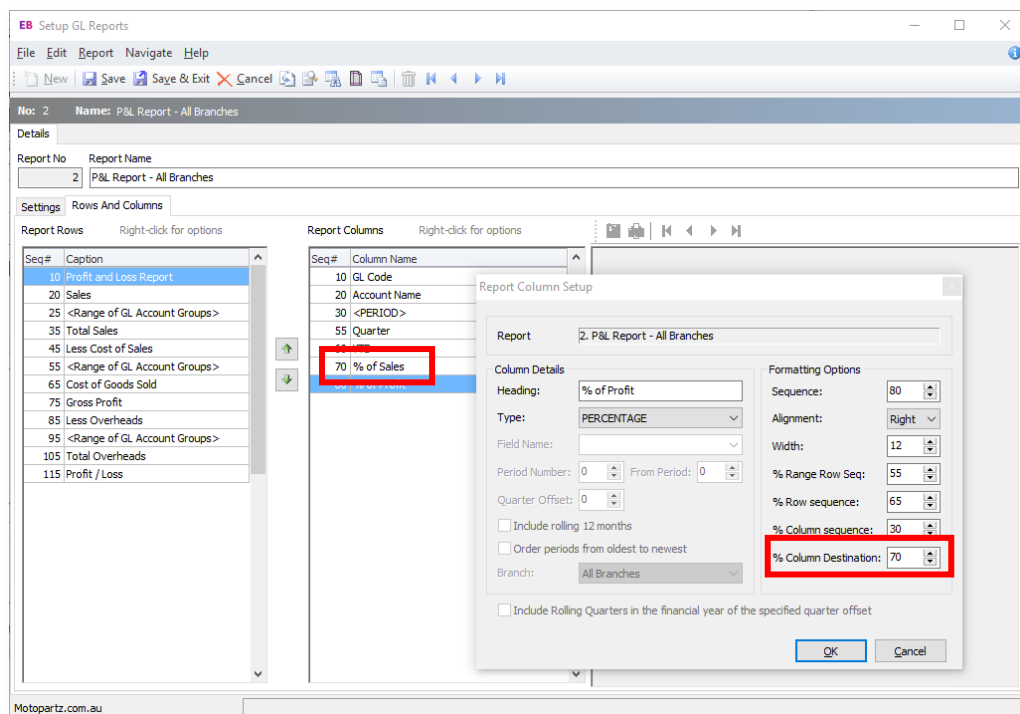
The effects of these settings can be seen when the report is previewed:

Motopartz.com.au  
**P&L Report - All Branches**  
 Budget Code "DEF\_BUDG"  
 Budget Code "DEF\_BUDG"  
 Report as at 31 July 2016  
 Printed 01/07/2016 15:44

GL Code	Account Name	July 2016	Quarter	YTD	% of Sales	% of Profit
<b>Profit and Loss Report</b>						
<b>Sales</b>						
01000-00	SALES	675.00	675.00	675.00	55.34%	
01000-01	ELECTRICAL	236.89	236.89	236.89	19.42%	
01000-02	ENGINE	62.04	62.04	62.04	5.09%	
01000-03	OTHER MECHANICAL PAR	133.15	133.15	133.15	10.92%	
01000-04	ACCESSORIES	112.68	112.68	112.68	9.24%	
	Total Sales	1,219.76	1,219.76	1,219.76	100.00%	
<b>Less Cost of Sales</b>						
02000-00	PURCHASES	(1,179.00)	(1,179.00)	(1,179.00)		32.90%
02050-00	COST OF GOODS SOLD	180.00	180.00	180.00		(5.02)%
02050-01	ELECTRICAL	177.67	177.67	177.67		(4.96)%
02050-02	ENGINE	49.99	49.99	49.99		(1.39)%
02050-03	OTHER MECHANICAL PAR	52.58	52.58	52.58		(1.47)%
02050-04	ACCESSORIES	84.56	84.56	84.56		(2.36)%
02100-00	STOCK ADJUSTMENT	(2,949.78)	(5,460.26)	(2,949.78)		82.30%
	Cost of Goods Sold	(3,583.98)	(6,094.46)	(3,583.98)		100.00%
	Gross Profit	4,803.74	7,314.22	4,803.74		

The “% of Sales” column contains percentage values for the Sales section only and the “% of Profit” column contains percentage values for the Less Cost of Sales section only.

This report contains a lot of blank space in the columns—the values from the “% of Profit” column can be moved into the “% of Sales column” by setting the “% of Profit” column’s **% Column Destination** to 70 (the ID of the “% of Sales” column):



## New Features

When previewed, the report now shows both sets of percentage values in the same column (which has been renamed to "% of Total").

Motopartz.com.au P&L Report - All Branches Budget Code "DEF_BUDG" Budget Code "DEF_BUDG" Report as at 31 July 2016 Printed 01/07/2016 15:46					
GL Code	Account Name	July 2016	Quarter	YTD	% of Total
<b>Profit and Loss Report</b>					
<b>Sales</b>					
01000-00	SALES	675.00	675.00	675.00	55.34%
01000-01	ELECTRICAL	236.89	236.89	236.89	19.42%
01000-02	ENGINE	62.04	62.04	62.04	5.09%
01000-03	OTHER MECHANICAL PAR	133.15	133.15	133.15	10.92%
01000-04	ACCESSORIES	112.68	112.68	112.68	9.24%
	Total Sales	1,219.76	1,219.76	1,219.76	100.00%
<b>Less Cost of Sales</b>					
02000-00	PURCHASES	(1,179.00)	(1,179.00)	(1,179.00)	32.90%
02050-00	COST OF GOODS SOLD	180.00	180.00	180.00	(5.02)%
02050-01	ELECTRICAL	177.67	177.67	177.67	(4.96)%
02050-02	ENGINE	49.99	49.99	49.99	(1.39)%
02050-03	OTHER MECHANICAL PAR	52.58	52.58	52.58	(1.47)%
02050-04	ACCESSORIES	84.56	84.56	84.56	(2.36)%
02100-00	STOCK ADJUSTMENT	(2,949.78)	(5,460.26)	(2,949.78)	82.30%
	Cost of Goods Sold	(3,583.98)	(6,094.46)	(3,583.98)	100.00%
	Gross Profit	4,803.74	7,314.22	4,803.74	

## ABN Verification

For Australian companies, Exo Business can now verify the Australian Business Numbers (ABNs) entered for Debtors and Creditor accounts using an online service provided by MYOB. A new profile setting, **Verification of the ABN against online resources**, is available to control what sorts of account the system should use the verification service for. This setting has the following options:

- None
- Debtors
- Creditors
- Debtors and Creditors (this is the default)

## Online Connectivity Check

A new **Check Online Connectivity** button is available on the About Exo Business window (Help > About). Clicking this button checks the status of the Exo Cloud Services, which provide functions such as geolocation services, Bank Feeds and ABN verification (see above). If there are any problems with connectivity, an error message containing details of the problems will be displayed.

## New Clarity Methods

This release adds new methods that can be used in Clarity reports.

### ShowGLCode

**procedure** ShowGLCode (GLCode: string; HasBranch: Boolean);

This opens the specified GL account from a Clarity report. The GLCode can be either a single number, e.g. 1000, or a formatted string, e.g. 1000-10 or 2-1000-10.

For example, assuming a DBText field called GLAccNo, you can add an OnDrawCommandClick handler as follows:

```
procedure GLAccNoOnDrawCommandClick(aDrawCommand: TObject);
var
    lDrawText: TppDrawText;
begin
    lDrawText := TppDrawText(aDrawCommand);
    if lDrawText.Text <> '' then
        ShowGLCode(lDrawText.Text, False);
end;
```

### FormatExoProtocolLink

**function** FormatExoProtocolLink(Command, Value: string): string;

This will return an Exo protocol link for a specified Command and Value, e.g.

```
Link := FormatExoProtocolLink('draccount', 10);
```

This will return “exo://<current alias>/draccount(10)” into the link.

This function can be used with the DBText.Hyperlink property in Clarity. Add a BeforePrint handler to the detail band, e.g.

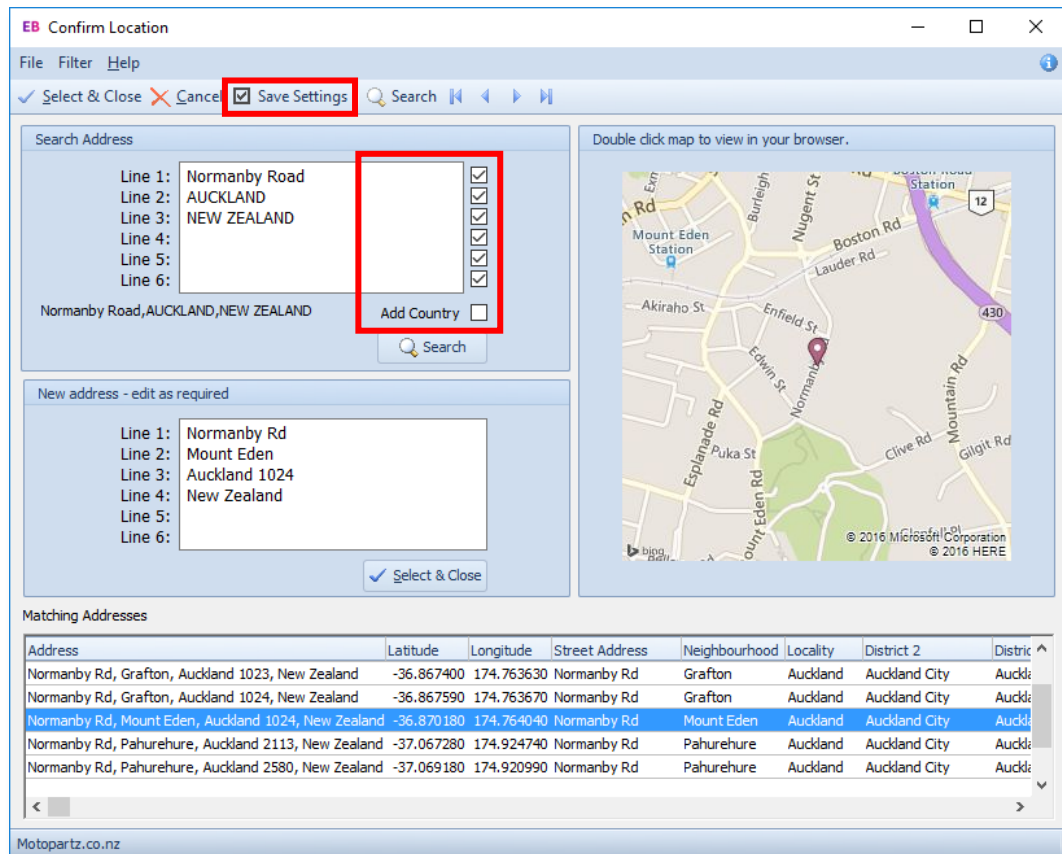
```
procedure DetailBeforePrint;
begin
    DBText1.HyperLink := FormatExoProtocolLink('draccount',
    MASTER['ACCNO']);
end;
```

Clicking on this link will then launch/open Exo Business, then open the relevant Debtor account.

**Note:** ShowGLCode uses the Exo protocol handler to enforce security constraints, i.e. as with all Exo protocol links, users cannot use them to access part of the Exo Business system that they do not have access rights for.

## Geolocation Updates

This release includes updates to the window that opens when Exo Business attempts to retrieve geolocation information for an address. The window has been reorganised to make it more compact, and features new controls that let you fine tune the way that accounts' addresses are matched to geolocation data.



The tick boxes next to each line in the **Search Address** panel can be used to exclude certain address lines from being matched; for example, if addresses have a building or unit number as the first line, this could be excluded from searches.

**Note:** You can also use the existing **Geo coding address format for Australia** and **Geo coding address format for New Zealand** profile settings to control how geolocation data is mapped to account addresses.

Ticking the new **Add Country** button automatically appends the country to the end of addresses if it is not already there, which can be useful if accounts' addresses do not usually include a country. (For Australian databases, "Australia" is appended; for New Zealand databases, "New Zealand" is.)

You can save these settings for all future searches by clicking the new **Save Settings** toolbar button.

## Interface Updates

### Windows Aero Theme

The Windows Aero theme is now enabled by default, providing a more modern interface that supports the Aero Flip and Peek features. These include enhanced ALT+TAB, CTRL+TAB and WINDOWS+TAB functionality which improve multitasking when working across several modules at once.

In previous versions, this theme had to be enabled by running Exo Business executables with the /AERO flag. This flag is no longer supported; instead a /NOAERO flag is now available to disable the default Aero theme.

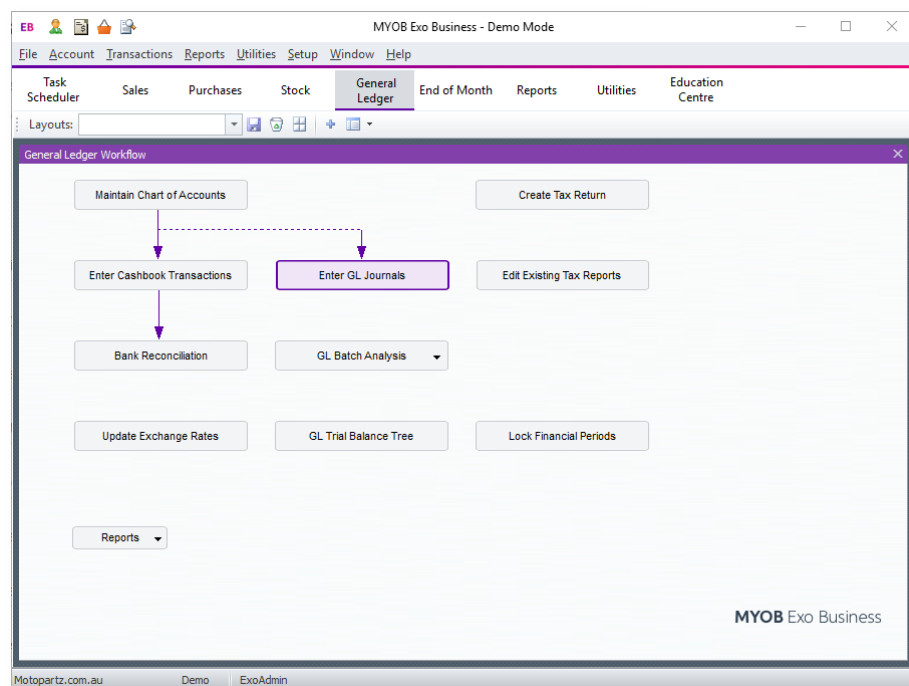
### Window Resizing

The Exo Business interface now resizes proportionally to match the dimensions of the window. This affects the panes that make up each screen and various text entry fields, e.g. address fields.

**Note:** To save a window's size and position, right-click on the window's title bar and select **Form Position > Save**.

### Rebranding

The MYOB Exo Employer Services suite of products has been rebranded with an all new look and feel:



When the DBUpdate process is run to upgrade to this version, the system attempts to install the new default Business Flow Menus. If no Business Flow Menus are in use, the default ones will be installed; if an older default menu is in use, the system will attempt to upgrade it to the new look.

## New Features

For systems that use customised Business Flow Menus, new template menus are available in MYOB Exo Configurator at **Staff > Menus > Business Flow Menu**—these templates can be used as the basis for new customised menus.

### Bank Feed Setup Columns

The columns on the Setup Bank Feed Rules window to make the setup process more intuitive. The **Link Operator** and **Invert** columns are now on the left side of the Rule Conditions and Action Conditions sections, making it clearer that these operators apply to the current row, not the rows that follow it.

**EF Setup Bank Feed Rules**

File Navigate Help

New Save Cancel Edit Delete Copy Rule Navigation arrows Exit

**Details**

Rule Type: Match Active ☒

Apply to Bank Account: All Manual ☐

Name: MATCHING RULE - DEBTOR & CREIDTOR

Account:

GL Account:

Payment Type:

Analysis Codes:

GST Rate:

**Rule Conditions:**

Link Operator	Invert	Match Field	Match Operator	Match Value
	<input checked="" type="checkbox"/>	BankFeedTransaction.RefNo]	Equals	
And	<input type="checkbox"/>	BankFeedTransaction.Text]	Equals	TELECOM

.....

**Action Conditions:**

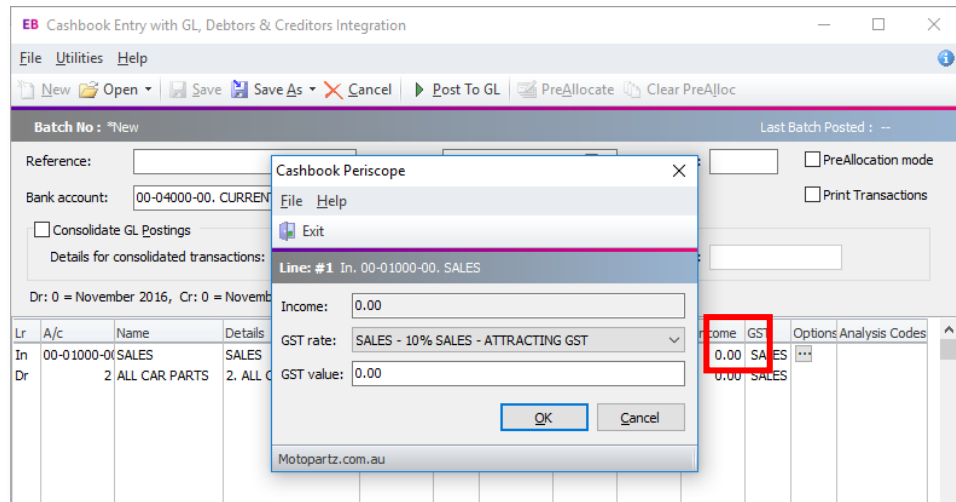
Link Operator	Invert	Match Field	Operator	Source Value
	<input type="checkbox"/>	[ExoTransaction.Amount]	Equals	[BankFeedTransaction.Amount]

Motopartz.com.au



## Cashbook Periscope

The Options column on the Integrated Cashbook window contains an edit button for Expense and Income transactions; this button opens the Cashbook Periscope window, where GST details for the line can be edited:

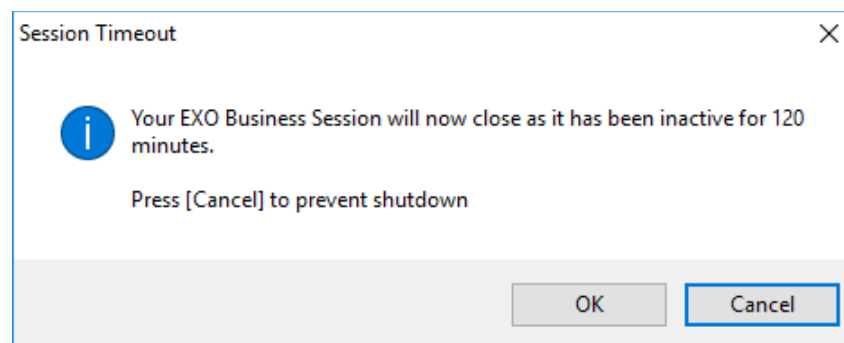


## Session Idle Timeout

This release adds the ability to configure an idle timeout for users, by configuring the new **Idle session timeout period in minutes** User-level profile setting. If this setting has a value greater than zero, then users will be logged out after a period of inactivity that exceeds the entered value (in minutes).

**Note:** Because this is a User-level profile setting, you can set different timeouts for different users, or have no timeout for some users.

A warning message appears when the idle timeout has been exceeded:



The user has 60 seconds to cancel, after which their session is ended and they are logged out of Exo Business. Their database connection is closed, any locks they had on records will be removed, and their licence will be freed up. If they had left any changes unsaved, these changed will be lost.

**Note:** Some key business processes are exempt from the timeout, including the MYOB Exo Configurator application.